

Integrated Molding Micro Applicator

Introduction Book

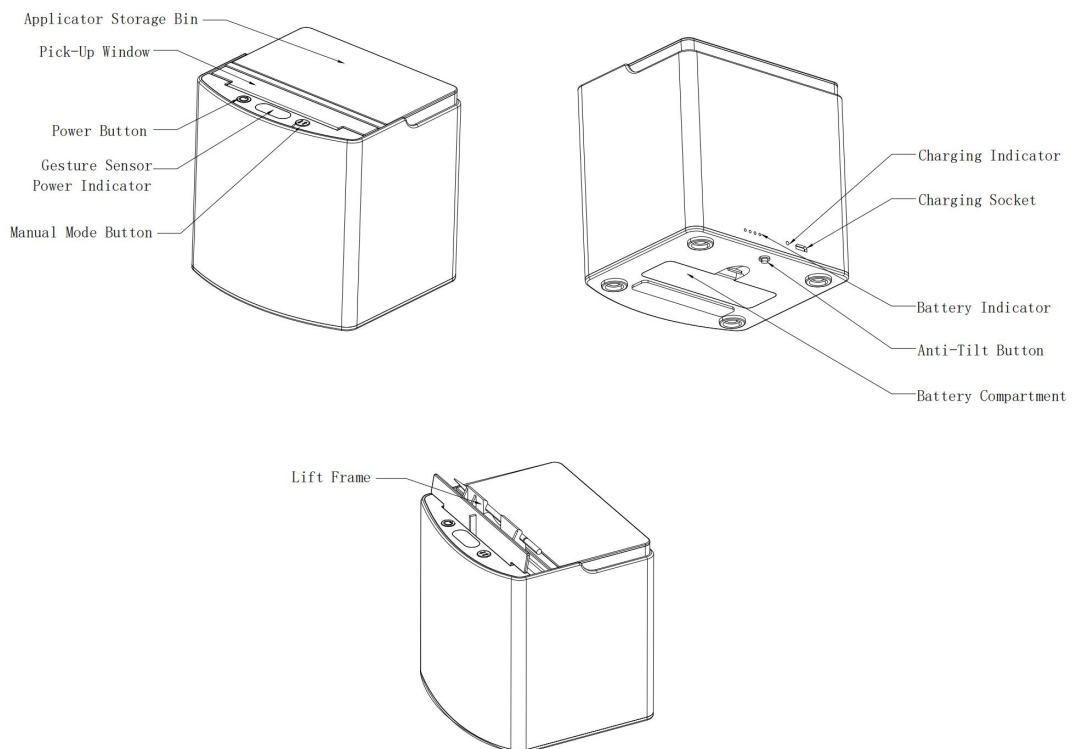
Chapter I Basic Introduction

1.1 Characteristics

This automatic applicator supply dispenser (hereinafter referred to as this product) is designed to provide users with the service of non-contact handling for sterilized applicator, so as to improve the convenience and hygiene of the user's handling operation, and improve the patient clinic experience.

This product has a built-in photosensitive gesture sensor and ultraviolet disinfection lamp. Just bring your hand close to the sensor, and the product will automatically provide the user with the applicator sterilized with the ultraviolet disinfection lamp. At the same time, this product has a built-in large-capacity rechargeable lithium battery, which does not need to be plugged in when working, and can be conveniently placed in more places while ensuring battery life.

1.2 Structure





1.3 Instructions for Use

1. For initial operation, please remove the safety blocking sheet on the front side of the storage bin and the protective sheet next to the battery electrode.
2. Place the product on a flat hard surface and trigger the anti-dump switch at the bottom to turn it on; when you are not using the product, press the power button for 3 seconds to turn it off ; To restart, you can also gently pick up and put down the product to re-trigger the anti-dump switch.
3. Induction Mode to Pick-Up: When you need to take the applicator in the induction mode, please put your hand close to the pick-up window and cover the top of the sensor in the power-on state, wait for a while, and the applicator will be lifted out. In this mode, the UV lamp will sterilize the product for 5 seconds. You can judge whether the UV disinfection lamp is working by observing whether the blue indicator light above is flashing. If you do not access the applicator in time and no longer cover the sensor, the applicator will be retracted and re-sterilized.
4. Manual Mode to Pick-Up: When you need to take the applicator in manual mode, please press the manual mode button \updownarrow in the power-on state, then the applicator is lifted out.

Please note: In this mode, you need to press the manual mode button again to retract the bracket, and there is no sterilization treatment. If you need to sterilize, please manually press the power button, and the UV lamp will sterilize the product for 30 seconds.

5. When the applicator in the storage bin is ran out, take out the empty bin and replace it with a new one. Before replacement, please turn off the product, then pull out the storage bin upwards, and then insert the new storage bin downwards in the correct position and orientation; If it cannot be seated, please check whether your storage bin is facing correctly.
6. The battery indicator at the rear can show you the current remaining battery. When the

power is low, please insert the charger provided with this product into the charging port to charge. When charging, the charging indicator is red; when charging is complete, the indicator turns green.

Chapter II Basic Performance

Size: 116mm × 105mm × 117mm

Battery Voltage: DC 3.7V

Battery Capacity: 2000mAh

Charger Input Voltage: DC 4.2V

Charger Output Voltage/Current: DC 5V/2A

Standby Time: 30 days

Max. Trigger Distance: 100mm–120mm

Max. Number of Applicator: 100pcs

Chapter III Precautions and Troubleshooting

3.1 Precautions

1. When the applicator is taken for the first time, manual disinfection is required.
2. Into—Liquids may cause damage to this product. Please keep it away from liquids when using it. Please be careful not to spill liquids, especially corrosive liquids on this product.
3. When using this product, please place it on a flat and solid place, and do not turn it upside down.
4. Do not use similar products produced by other manufacturers as supplements to prevent damage due to poor internal coordination.
5. The disinfection time in manual mode does not follow the preset, please arrange the interval of taking it reasonably to prevent the disinfection effect of the applicator from being unsatisfactory.
6. Do not place other items on this product, especially do not block the pick—up window.

7. Please use the 5V/2A charger included with this product when charging.
8. Please remove the charger in time after charging is completed. Long-term charging may be dangerous.
9. When not in use for a long time, please remove the battery and place the product in a dry and ventilated place, avoiding light and extrusion.
10. If you hear abnormal noise during use, please turn off the product in time.
11. When this product is working, please do not look directly at the disinfection blue light.

3.2 Troubleshooting

1. Multiple empty lifts

Please check whether the applicator is ran out or stuck. If the above happens, please replace the storage bin or refer to item 3 to reset the storage bin.

2. No response after using gestures or pressing multiple times

Please check whether the product is turned on, whether the battery power is sufficient, whether the sensor is blocked or whether the applicator is stuck. Please try restarting after removing the obstacle or charging; if the applicator is stuck, please refer to item 3 to reset the storage bin.

3. The applicator is stuck

This requires you to remove the storage bin and the stuck applicator and reinstall it. Before removing an incompletely used storage bin, please turn off the product and tilt it back to prevent the remaining applicator in the bin from spilling. Then pull out the storage bin and remove the stuck applicator. After troubleshooting, pull down the movable panel door of the storage bin and reinsert it.

4. Into the liquid

At this time, please take out the battery immediately and place the product in a dry and ventilated place. If the product still cannot be used normally after drying, please contact the maintenance party.

When you encounter a fault that cannot be eliminated, please contact the maintenance party for support.

In any case, we do not recommend that you disassemble the non-consumable parts by yourself, otherwise irreversible damage may occur. If you disassemble it by yourself, we will no longer provide with warranty service.